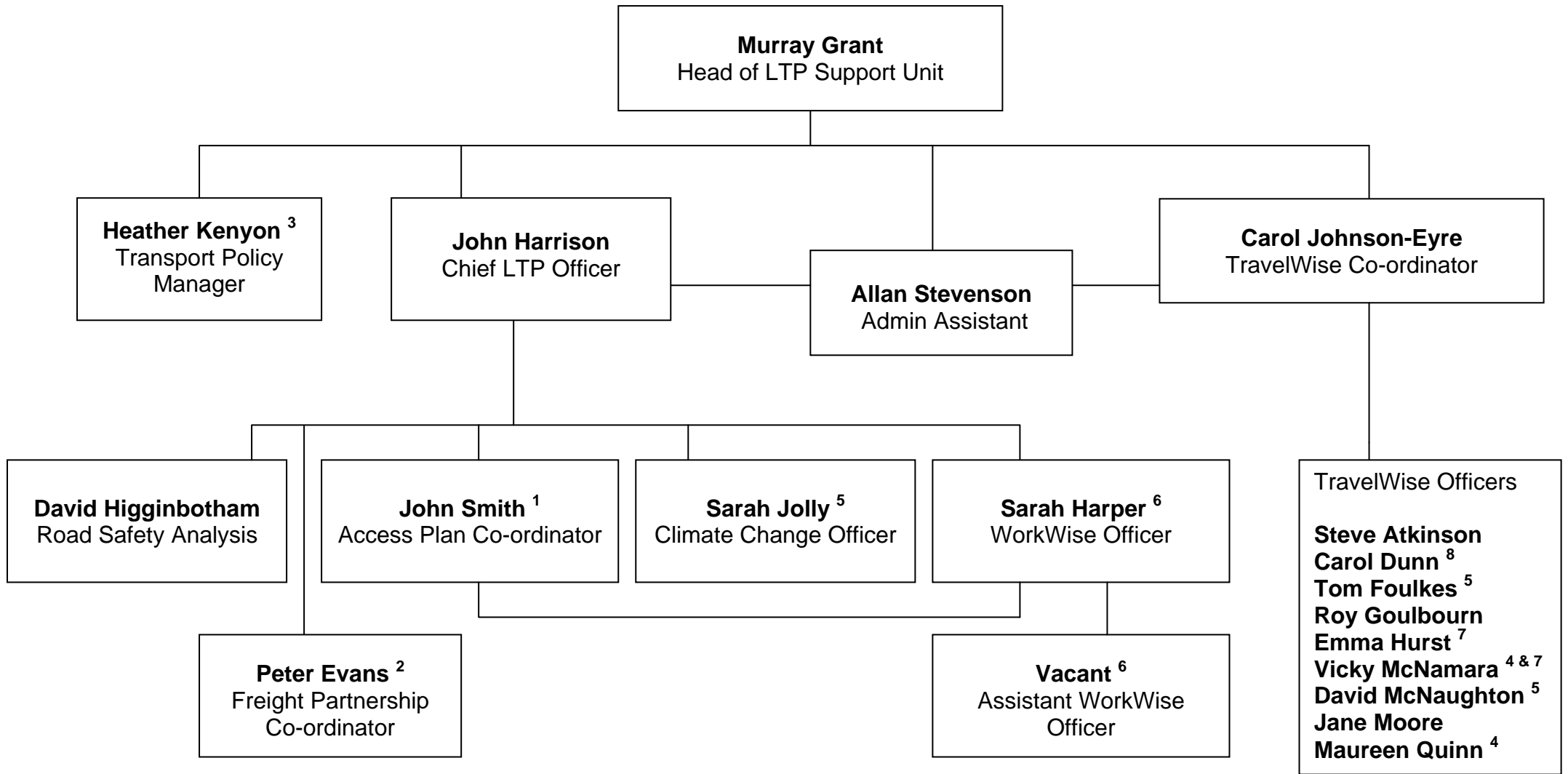


MERSEYSIDE LTP SUPPORT UNIT ORGANISATIONAL CHART



- 1 Seconded from Merseytravel. Joint management arrangements with CPO. Allows 'independent' approach to managing the Accessibility Strategy.
- 2 Secondment from 2020 Liverpool for 2 days a week, JWB Funded
- 3 MSTEg funded post; located with MPU to reflect responsibilities for regional and European issues. Joint management arrangement with Head of MPU, but all work steered by LTP CG and MSTEg. Primarily based at Princes Parade, pay and rations currently provided by Liverpool City Council.
- 4 Job share.
- 5 Fixed term contract to March 2011.
- 6 Funded by European North West Operational Programme until December 2010
- 7 On maternity leave.
- 8 Maternity cover post